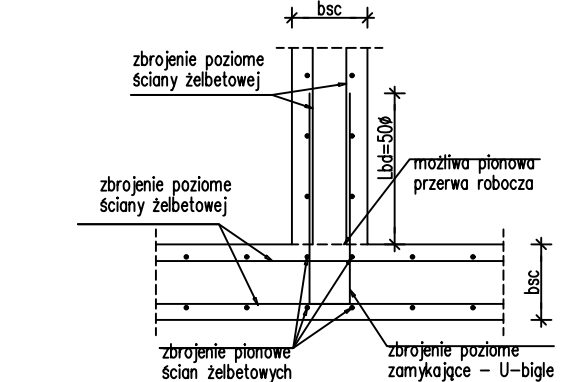
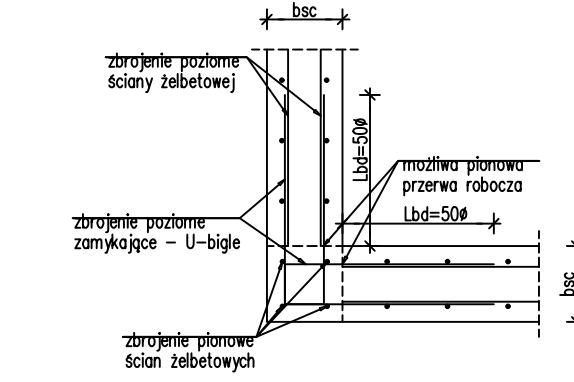


Zbrojenie zamykające poziome parteru

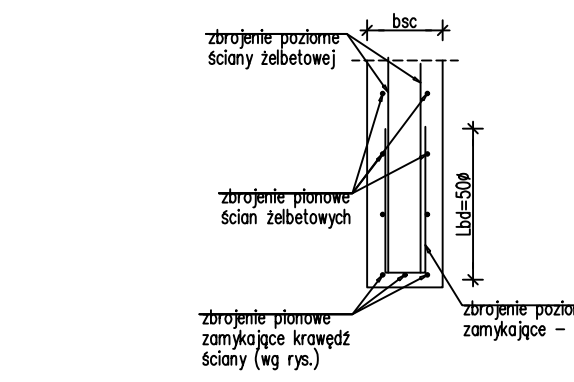
SZCZEGÓŁ ŁĄCZENIA ZBROJENIA POZIOMEGO
W NAROŻACH "I" ŚCIAN ŻELBETOWYCH
skala 1:25



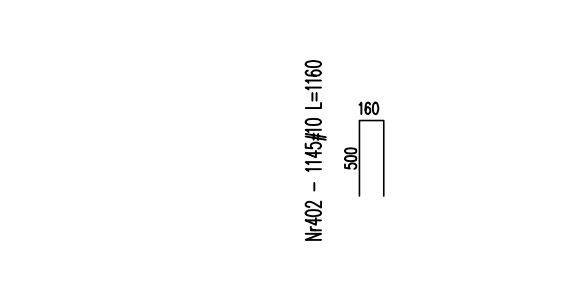
SZCZEGÓŁ ŁĄCZENIA ZBROJENIA POZIOMEGO
W NAROŻACH "L" ŚCIAN ŻELBETOWYCH
skala 1:25



SZCZEGÓŁ ZBROJENIE PIONOWEGO
SWOBODNEJ KRAWĘDZI ŚCIANY
skala 1:25



zamykające - U-biżę do ściany 24cm (otwór 2,5cm)



Nr	Ilość [szt]	Śred [mm]	Długość [mm]	#10	UWAGI
402	1145	#10	1160	1328.2	
RAZEM wg średnic [m]					
MASA 1mb [kg/m]					
RAZEM wg średnic [kg]					
RAZEM wg gat. stali [kg]					

wymiary w osi

UWAGI:

- Rysunek rozpatrywać łącznie z rysunkami szalunkowymi i zbrojowymi oraz architekturą.
- W wąskich flankach nienaznaczając się U-biżę kształtować jak strzemioma lub dobrać i dowiezywać dwie szuki ze sobą
- Osiłina prętów zbrojenia zgodnie z rysunkami ścian
- Długość zakładu prętów powinna wynosić min. 500 (0 - średnica pręta)
- Opisy zbrojenia podano w mm.

Nr	Ilość [szt]	Śred [mm]	Długość [mm]	#12	UWAGI
1	1	#12	64000	64	
RAZEM wg średnic [m]					
MASA 1mb [kg/m]					
RAZEM wg średnic [kg]					
RAZEM wg gat. stali [kg]					

wymiary w osi

Nr1-1#12 L=64000

Nr1-1#12 L=64000

Nr1-1#12 L=64000

Nr1-1#12 L=64000

Nr1-1#12 L=64000

Nr1-1#12 L=64000

Nr1-1#12 L=64000

Nr1-1#12 L=64000

Nr1-1#12 L=64000

Nr1-1#12 L=64000

Nr1-1#12 L=64000

Nr1-1#12 L=64000

Nr1-1#12 L=64000

Nr1-1#12 L=64000

Nr1-1#12 L=64000

Nr1-1#12 L=64000

Nr1-1#12 L=64000

Nr1-1#12 L=64000

Nr1-1#12 L=64000

Nr1-1#12 L=64000

Nr1-1#12 L=64000

Nr1-1#12 L=64000

Nr1-1#12 L=64000

Nr1-1#12 L=64000

Nr1-1#12 L=64000

Nr1-1#12 L=64000

Nr1-1#12 L=64000

Nr1-1#12 L=64000

Nr1-1#12 L=64000

Nr1-1#12 L=64000

Nr1-1#12 L=64000

Nr1-1#12 L=64000

Nr1-1#12 L=64000

Nr1-1#12 L=64000

Nr1-1#12 L=64000

Nr1-1#12 L=64000

Nr1-1#12 L=64000

Nr1-1#12 L=64000

Nr1-1#12 L=64000

Nr1-1#12 L=64000

Nr1-1#12 L=64000

Nr1-1#12 L=64000

Nr1-1#12 L=64000

Nr1-1#12 L=64000

Nr1-1#12 L=64000

Nr1-1#12 L=64000

Nr1-1#12 L=64000

Nr1-1#12 L=64000

Nr1-1#12 L=64000

Nr1-1#12 L=64000

Nr1-1#12 L=64000

Nr1-1#12 L=64000

Nr1-1#12 L=64000

Nr1-1#12 L=64000

Nr1-1#12 L=64000

Nr1-1#12 L=64000

Nr1-1#12 L=64000

Nr1-1#12 L=64000

Nr1-1#12 L=64000

Nr1-1#12 L=64000

Nr1-1#12 L=64000

Nr1-1#12 L=64000

Nr1-1#12 L=64000

Nr1-1#12 L=64000

Nr1-1#12 L=64000

Nr1-1#12 L=64000

Nr1-1#12 L=64000

Nr1-1#12 L=64000

Nr1-1#12 L=64000

Nr1-1#12 L=64000

Nr1-1#12 L=64000

Nr1-1#12 L=64000

Nr1-1#12 L=64000

Nr1-1#12 L=64000

Nr1-1#12 L=64000

Nr1-1#12 L=64000

Nr1-1#12 L=64000

Nr1-1#12 L=64000

Nr1-1#12 L=64000

Nr1-1#12 L=64000

Nr1-1#12 L=64000

Nr1-1#12 L=64000

Nr1-1#12 L=64000

Nr1-1#12 L=64000

Nr1-1#12 L=64000

Nr1-1#12 L=64000

Nr1-1#12 L=64000

Nr1-1#12 L=64000

Nr1-1#12 L=64000

Nr1-1#12 L=64000

Nr1-1#12 L=64000

Nr1-1#12 L=64000

Nr1-1#12 L=64000

Nr1-1#12 L=64000

Nr1-1#12 L=64000

Nr1-1#12 L=64000

Nr1-1#12 L=64000

Nr1-1#12 L=64000

Nr1-1#12 L=64000

Nr1-1#12 L=64000

Nr1-1#12 L=64000

Nr1-1#12 L=64000

Nr1-1#12 L=64000

Nr1-1#12 L=64000

Nr1-1#12 L=64000

Nr1-1#12 L=64000

Nr1-1#12 L=64000

Nr1-1#12 L=64000

Nr1-1#12 L=64000

Nr1-1#12 L=64000

Nr1-1#12 L=64000

Nr1-1#12 L=64000

Nr1-1#12 L=64000

Nr1-1#12 L=64000

Nr1-1#12 L=64000

Nr1-1#12 L=64000

Nr1-1#12 L=64000

Nr1-1#12 L=64000

Nr1-1#12 L=64000

Nr1-1#12 L=64000

Nr1-1#12 L=64000

Nr1-1#12 L=64000

Nr1-1#12 L=64000

Nr1-1#12 L=64000

Nr1-1#12 L=64000

Nr1-1#12 L=64000

Nr1-1#12 L=64000

Nr1-1#12 L=64000

Nr1-1#12 L=64000

Nr1-1#12 L=64000

Nr1-1#12 L=64000

Nr1-1#12 L=64000

Nr1-1#12 L=64000

Nr1-1#12 L=64000

Nr1-1#12 L=64000

Nr1-1#12 L=64000

Nr1-1#12 L=64000

Nr1-1#12 L=64000

Nr1-1#12 L=64000

Nr1-1#12 L=64000

Nr1-1#12 L=64000

Nr1-1#12 L=64000

Nr1-1#12 L=64000

Nr1-1#12 L=64000

Nr1-1#12 L=64000

Nr1-1#12 L=64000

Nr1-1#12 L=64000

Nr1-1#12 L=64000

Nr1-1#12 L=64000

Nr1-1#12 L=64000

Nr1-1#12 L=64000

Nr1-1#12 L=64000

Nr1-1#12 L=64000

Nr1-1#12 L=64000

Nr1-1#12 L=64000

Nr1-1#12 L=64000

Nr1-1#12 L=64000

Nr1-1#12 L=64000

Nr1-1#12 L=64000

Nr1-1#12 L=64000

Nr1-1#12 L=64000

Nr1-1#12 L=64000

Nr1-1#12 L=64000

Nr1-1#12 L=64000

Nr1-1#12 L=64000

Nr1-1#12 L=64000

Nr1-1#12 L=64000

Nr1-1#12 L=64000

Nr1-1#12 L=64000

Nr1-1#12 L=64000

Nr1-1#12 L=64000

Nr1-1#12 L=64000

Nr1-1#12 L=64000

Nr1-1#12 L=64000

Nr1-1#12 L=64000

Nr1-1#12 L=64000

Nr1-1#12 L=64000

Nr1-1#12 L=64000

Nr1-1#12 L=64000

Nr1-1#12 L=64000

Nr1-1#12 L=64000

Nr1-1#12 L=64000

Nr1-1#12 L=64000

Nr1-1#12 L=64000

Nr1-1#12 L=64000

Nr1-1#12 L=64000

Nr1-1#12 L=64000

Nr1-1#12 L=64000

Nr1-1#12 L=64000

Nr1-1#12 L=64000

Nr1-1#12 L=64000

Nr1-1#12 L=64000

Nr1-1#12 L=64000

Nr1-1#12 L=64000

Nr1-1#12 L=64000

Nr1-1#12 L=64000

Nr1-1#12 L=64000